



12920 SUNNYSIDE PL
SANTA FE SPRINGS CA 90670
Con. Lic 1099102 C-11

TYPICAL MACHINE ROOM

ROOM SHOULD BE AT BOTTOM LEVEL NEAR ELEVATOR

ROOM SIZES ARE MINIMUMS. MORE IS ALWAYS BETTER

5'-2" FOR 80 GAL PUMP UNIT FOR 2-3 FLOORS PUMP 42.5" BY 20"
5'-4" FOR 140 GAL PUMP UNIT FOR 4-5 FLOORS PUMP 43.5" BY 30"
6'-0" FOR 190 GAL PUMP UNIT FOR 6-7 FLOORS PUMP= 51.5" BY 29.5"

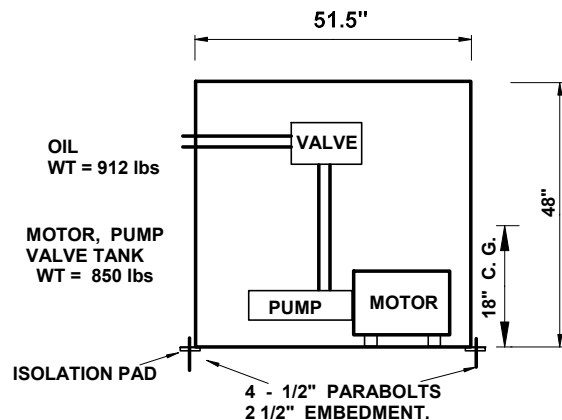
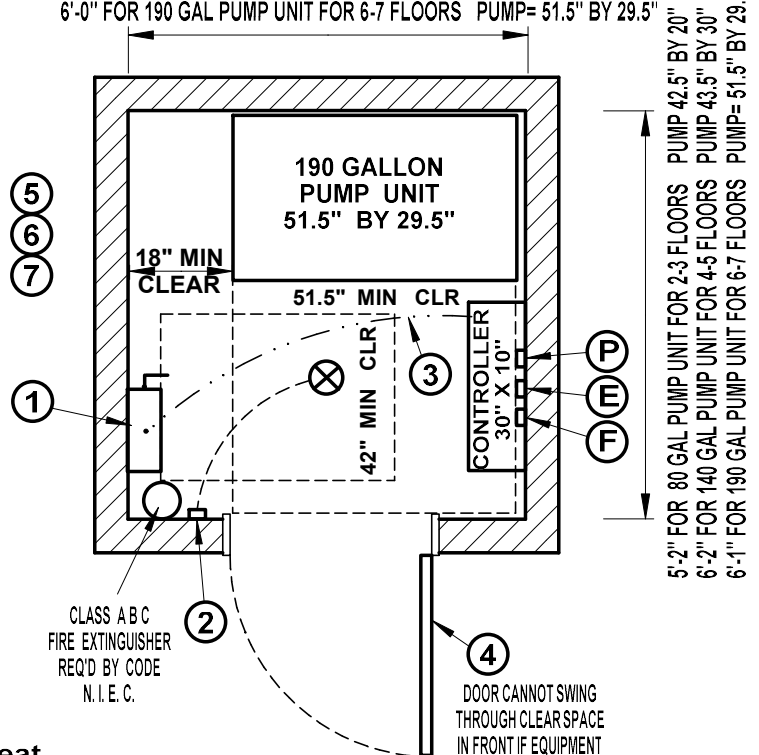
MACHINE ROOM NOTES

The following items for the elevator are furnished by OTHERS.
NOT IN ELEVATOR CONTRACT

- ① FUSED DISCONNECT SWITCH, SIZED FOR MOTOR. <Grounded E 620-82>
 - ② Light, switch and GFI outlet required in machine room. Code E-620-22.
 - ③ Power connected to elevator controller in EMT with copper wire.
 - ④ Self closing and self locking door. ASME A 17.1-2004 2.7.3.4.1
 - ⑤ Head room of at least 7' - 0". Code 300.2{101.4}
 - ⑥ Only elevator required equipment, pipes, conduits ETC are allowed in machine room - ASME A17.1-2004 2.7.2.1
 - ⑦ A/C, Heat or Vent (300 sq in.min) machine room. Maintain room 60 deg F. to 104 deg F. ASME17.1-2004 2.7.5.2 N. I. E. C.
 - ⑧ Smoke and heat Detector Req'd in mach room. ASME A17.1-2004 2.27.3.2
 - ⑨ If Sprinklers are in the machine room or hoistway above 24" from pit floor, Heat detectors or flow switch required to disconnect electrical power to elevator before water is applied. Shunt trip pilot monitoring required. ASME A17.1-2004 2.8.2.3.2
- Ⓟ Phone jack RJ11C with DIAL TONE in machine room.
- ⓔ Elevators shall have a fused single means disconnect switch, lockable in the off position, for the car lighting power circuit located in the machine room for that car. Code E620-53 & 620-22(a)
- ⓕ FIRE SERVICE RECALL. - FIRE RECALL SIGNALS Requires wires and relays from fire alarm panel or smoke detectors, normally closed contact to open to call elevator. Primary, Alternate and Hat. Rated 1 amp 24 Volt DC.

HEAT RELEASED FROM PUMP UNIT

10 HP = 5,725 BTU/HR
20 HP = 7,635 BTU/HR
25 HP = 9,545 BTU/HR
30 HP = 11,455 BTU/HR
40 HP = 15,720 BTU/HR
50 HP = 21,000 BTU/HR



190 GAL SUBMERSIBLE PUMP UNIT
MACHINE MOUNTING
749 LBS